

PATENTED

EUROPEAN PATENT
Nr.: EP 4 003 917



DRAG'EAU®

THE SUSTAINABLE ANTISCALE



PREVENTIVE, CURATIVE AND SELF-SUFFICIENT



We do physically what others do chemically.

THE ECO-FRIENDLY SOLUTION

AGAINST LIMESCALE

Limescale is naturally present in mainwater.

Whatever its concentration, it ends up causing damage to household appliances, plumbing or the home's hot water circuit.

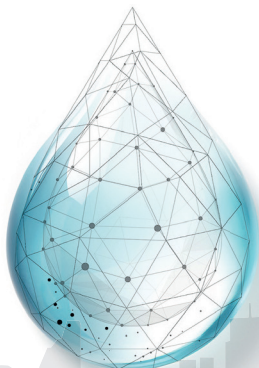
This initially invisible phenomenon leads to significant excess energy consumption before we realize it.

With nearly 20 years of experience in the water treatment solutions, DRAG'EAU has become a world leader in its industry, while maintaining the flexibility and know-how of a family business.

DRAG'EAU self-sufficient antiscalers are designed to offer solutions that go beyond the limits of the traditional chemical approach with softeners while making daily work of professionals easier and saving money for home owners.

With no salt, no chemicals, no settings, no maintenance, DRAG'EAU does physically what others do chemically.

From technical inspection to problem resolution, our technicians are available to support you throughout the entire process.



PREVENTIVE

Permanent protection against limescale and corrosion

CURATIVE

Descales pipes, valves and heat exchangers

PRACTICAL

Simple and quick to install
Space-saving device

COST-EFFECTIVE

No maintenance, no salt and chemicals
no electricity
Reduces energy waste

PROTECTS

Improves lifespan for all equipment

ECO-FRIENDLY

Physical treatment with no chemicals
Healthy



AN INNOVATIVE 3-STEP TECHNOLOGY

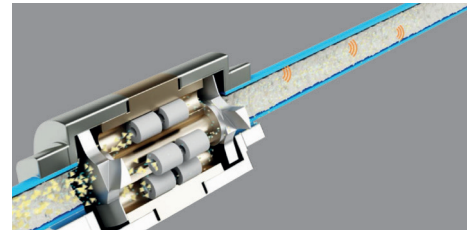


SEE OUR VIDEO

1

LIMESCALE DISSOLUTION

The waterflow produces a powerful **VORTEX EFFECT** which increases the dissolving power of the water and weakens the structure of the limescale.

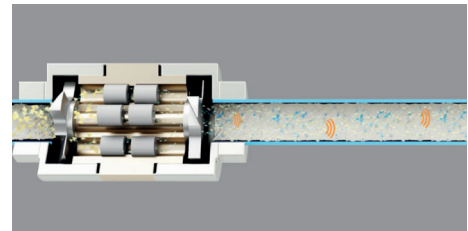


2

LIMESCALE MICRO-CRYSTALLISATION

On entering the device, the water molecules are accelerated (Venturi effect) and make the stainless steel cylinders vibrate at the exact frequency of limescale fracturing.

This low-frequency, high-intensity **SOUND WAVE**, inaudible to humans, pulverizes the limestone and propagates throughout the system. The encrusting limestone turns into non-encrusting microcrystals.

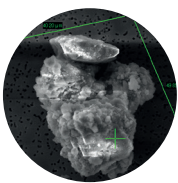
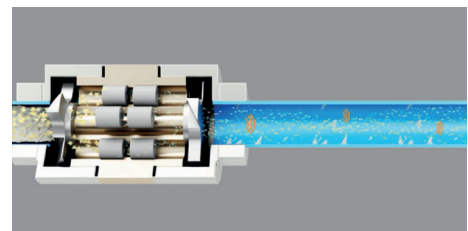


3

DESCALING

Our device can also have a restorative effect on facilities. **SOUND WAVES** propagate in the water throughout the system and dissolve encrusted lime deposits.

Once descaling is complete, a fine, uniform protective layer remains: the limescale is neutralised and installations protected.

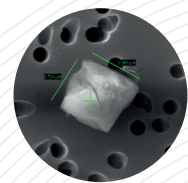


ENCRUSTING
limescale

THE DRAG'EAU ANTISCALE

AFTER TREATMENT

the crystals are much smaller,
the contact surface is reduced
by more than 200 times and is much smoother.



NON-ENCRUSTING
limescale

ALL-IN-ONE DEVICES SUITED TO ANY ENVIRONMENT

DRAG'EAU ANTISCALE can be installed directly in line on main water and do not require any modifications to the existing system. Tens of thousands of home owners, social housers, house builders, manufacturers, plumbers and maintenance companies, to name but a few, have chosen DRAG'EAU technology.



Home owners



Commercials / Offices



Industry


- ✓ Preserves water quality
- ✓ Saves energy

- ✓ Reduces maintenance costs
- ✓ Lasting protection for the DHW circuit

- ✓ Protects equipment
- ✓ Maintains production performance
- ✓ Reduces breakdowns


ANTISCALE RANGE

Apartments




EF-i15

Home




EF-i20

Commercials, Offices & Industry



EF-i25

from EF-i25 to EF-i50




EF-i150

from EF-i50b to EF-i150

SCREW-FITTING
MODELS

FLANGE-FITTING
MODELS

- Body material **INOX 316L**
- Temperature tolerance **from -20°C to +155°C**
- Maximum pressure **25 bars**
- Maximum (TH) hardness treated: **70°f**



Model	EF-i15	EF-i20	EF-i25	EF-i32	EF-i40	EF-i50	EF-i50b	EF-i65	EF-i80	EF-i100	EF-i150
Nominal diameter (SI) mm	15	20	25	32	40	50	50	65	80	100	150
Nominal diameter (imperial)	1/2"	3/4"	1"	1 1/4"	1 1/2"	2"	2"	2 1/2"	3"	4"	6"
Maximum flow capacity m ³ /h	0,9	2,7	4,2	5,9	11,2	17,8	17,8	27	41	87	285
Pressure drop at maximum flow mbar	108	169	165	207	183	179	179	146	122	174	249
Total length mm	100	106	119	145	160	170	170	255	280	365	410

Contact us for references, other diameters and special applications. Our design office is ready to help you.

For more information, please contact our Business Development Director, Jordane Mercier, by phone at +33 6 76 98 91 76 or by email at j.mercier@drageau.com

Follow us on social media

DRAG'EAU SARL
4 rue Marin La Meslée
ZA La Passerelle 1
F-68190 ENSISHEIM

DRAGEAU.COM

Subject to technical and design modifications and errors. • Photos for illustration only • DRAG'EAU SARL with capital of 500 000 euros • RCS 529 522 021 Colmar • Do not litter in public areas • 4P Antiscale 300126